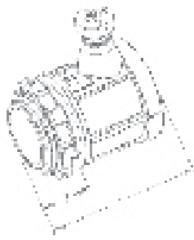


SET SCREW CONNECTORS (STEEL)

HALEX PART #	DIMENSIONS (INCHES)			HALEX PART #	DIMENSIONS (INCHES)		
	A	B	C		A	B	C
62725B	3.24	3.15	0.81	WITH INSULATED THROAT			
62730B	3.74	3.78	0.88	82725B	3.24	3.15	0.81
62735B	3.99	4.28	0.98	82730B	3.74	3.78	0.88
62740B	4.24	4.78	1.03	82735B	3.99	4.28	0.98
				82740B	4.24	4.78	1.03



SET SCREW CONNECTORS (ZINC DIE CAST)

HALEX PART #	DIMENSIONS (INCHES)		HALEX PART #	DIMENSIONS (INCHES)	
	A	B		A	B
12125B	3.03	1.00	WITH INSULATED THROAT		
12130B	3.37	1.06	92125B	3.03	1.00
12135B	3.58	1.09	92130B	3.37	1.06
12140B	3.75	1.09	92135B	3.58	1.09
			92140B	3.75	1.09



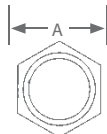
SET SCREW COUPLINGS (ZINC DIE CAST)

HALEX PART #	DIMENSIONS (INCHES)		HALEX PART #	DIMENSIONS (INCHES)	
	A	B		A	B
12225B	3.99	3.30	12235B	4.92	4.45
12230B	4.55	3.94	12240B	5.24	4.97



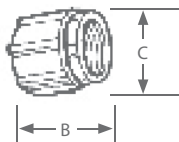
SET SCREW COUPLINGS (STEEL)

HALEX PART #	DIMENSIONS (INCHES)		HALEX PART #	DIMENSIONS (INCHES)	
	A	B		A	B
62825B	3.99	3.30	62835B	4.92	4.45
62830B	4.55	3.94	62840B	5.24	4.97



RIGID THREE-PIECE COUPLINGS (MALLEABLE IRON)

HALEX PART #	DIMENSIONS (INCHES)			HALEX PART #	DIMENSIONS (INCHES)		
	A	B	C		A	B	C
65505B	1.188	0.984	1.406	65525B	3.500	1.938	4.031
65507B	1.375	1.125	1.641	65530B	4.125	2.250	4.531
65510B	1.688	0.750	2.016	65535B	4.688	2.594	5.297
65512B	2.063	1.500	2.516	65540B	5.406	3.078	5.719
65515B	2.344	1.672	2.828				
65520B	3.000	1.781	3.359				



RIGID-TO-RIGID PULL ELBOWS (ZINC DIE CAST)

HALEX PART #	DIMENSIONS (INCHES)		HALEX PART #	DIMENSIONS (INCHES)	
	A	B		A	B
WITH NEOPRENE GASKET			94107	1.50	1.27
94105	1.31	1.02	94107B	1.50	1.27
94105B	1.31	1.02	94110	1.85	1.54